

LIVING IN CHRISTCHURCH

A GREAT PLACE TO LIVE, WORK AND PLAY!



2ND BEST CITY

New York Times ranked Christchurch as the #2 place in the world to go in 2014



NZ'S SECOND LARGEST CITY

Population of 361,900



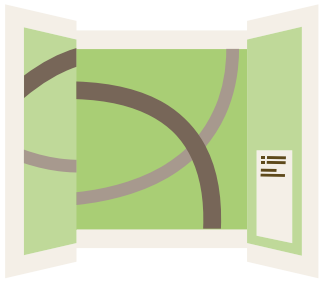
HIGHER EDUCATION

Two universities and two polytechnic institutes of technology



14 SKI AREAS

Nine ski and snowboard areas within two hours drive; 14 within three



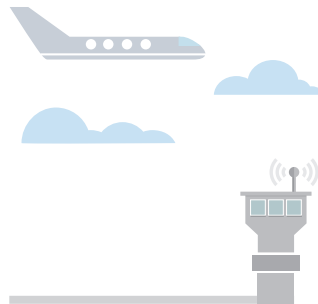
WALKING

80 kilometres of city walking tracks



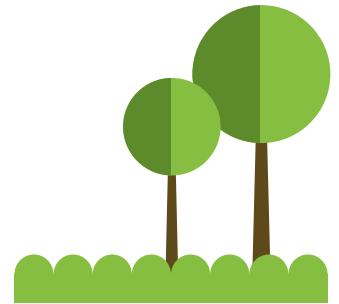
RENTAL RATES

Christchurch rents are 14% lower than Auckland



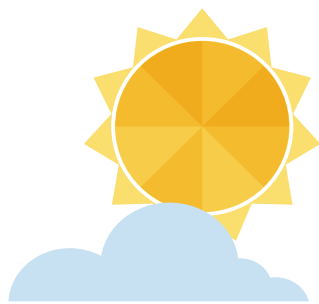
INTERNATIONAL AIRPORT

15 minute drive to CBD



GREEN SPACES

740 city parks covering 3,000ha



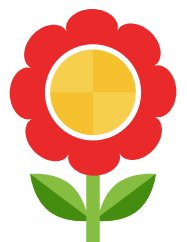
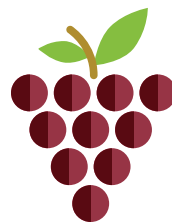
LET IT SHINE!

2,143 annual sunshine hours



ACTIVITIES FOR EVERYONE

Ski and snow board, bungee jump, rock climb, mountain bike, river raft, kayak, surf, swim at safe beaches, golf, whale watch, swim with dolphins, gardens and enjoy the vibrant arts and culture scene.



Canterbury Development Corporation
99 Cashel Street, Christchurch, New Zealand

Phone: 03 379 5575
Email: cdc@cdc.org.nz

www.cdc.org.nz